

ELECTRICAL



PALLETTE STONE CORP.

Precast Product Division | 373 Washington Street, Saratoga Springs, New York 12866

Phone: (518) 584-5891 | Fax (518) 584-2622 | www.dacollins.com

2'-0" x 2'-0" x 2'-0" ID PULLBOX

NOTES:

CONCRETE: 4000 PSI

REINFORCEMENT: ASTM A185 GR 65

REINFORCEMENT: ASTM A615 GR 60

ENTRAINED AIR: 5.0% - 9.0%

AASHTO H-20 LL

THICKNESSES:

BASE SLAB - 6"

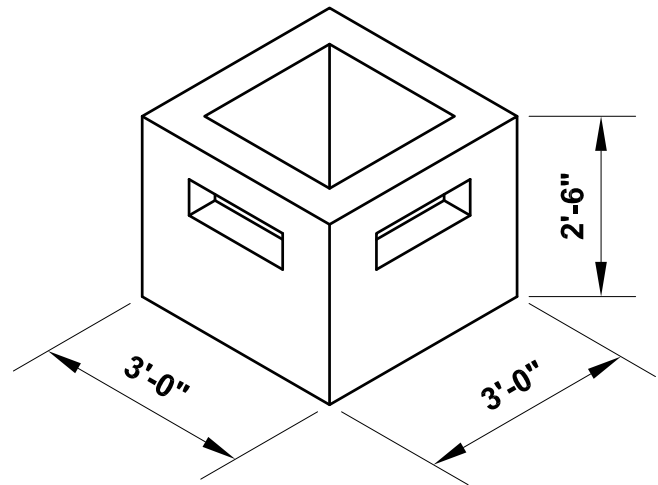
WALLS - 6"

ROOF SLAB (IF REQUIRED) - 6"

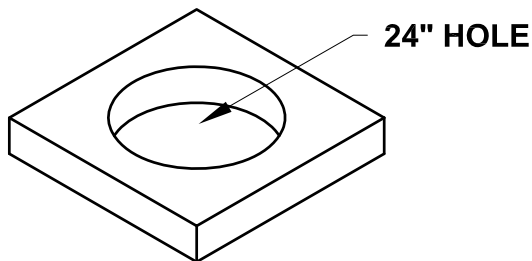
WEIGHTS:

INT. BASE - 2175 LBS

ROOF SLAB - 675 LBS

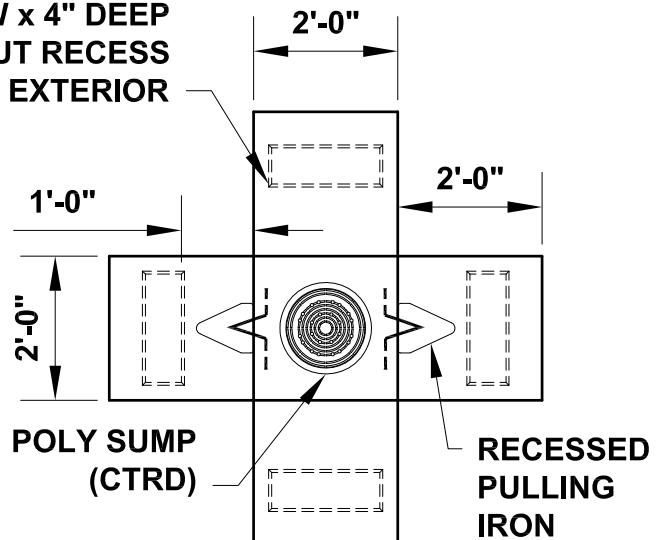


ISOMETRIC VIEW



ROOF SLAB

6"H x 18"W x 4" DEEP
KNOCKOUT RECESS
ON EXTERIOR



SIDES FOLD UP

PALLETTE STONE CORP.

Precast Product Division | 373 Washington Street, Saratoga Springs, New York 12866

Phone: (518) 584-5891 | Fax (518) 584-2622 | www.dacollins.com

2'-6" x 2'-6" x 2'-6" ID PULLBOX

NOTES:

CONCRETE: 4000 PSI

REINFORCEMENT: ASTM A185 GR 65

REINFORCEMENT: ASTM A615 GR 60

ENTRAINED AIR: 5.0% - 9.0%

AASHTO H-20 LL

THICKNESSES:

BASE SLAB - 6"

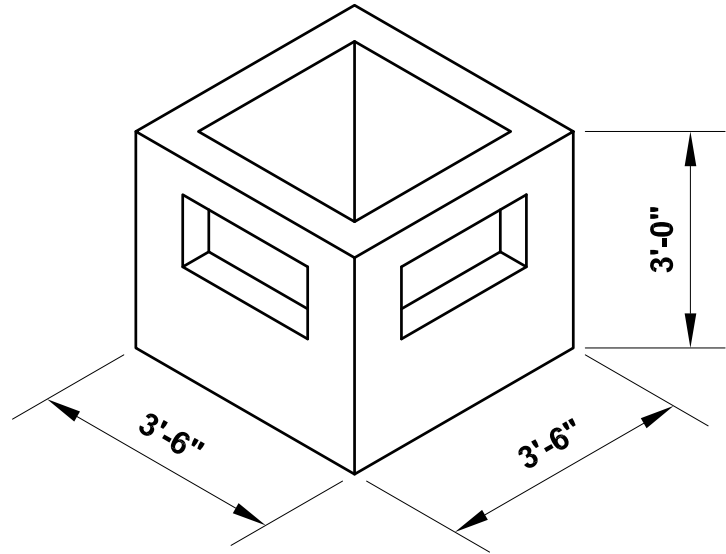
WALLS - 6"

ROOF SLAB (IF REQUIRED) - 6"

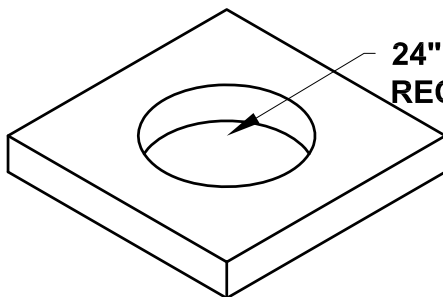
WEIGHTS:

INT. BASE - 3168LBS

ROOF SLAB - 920LBS

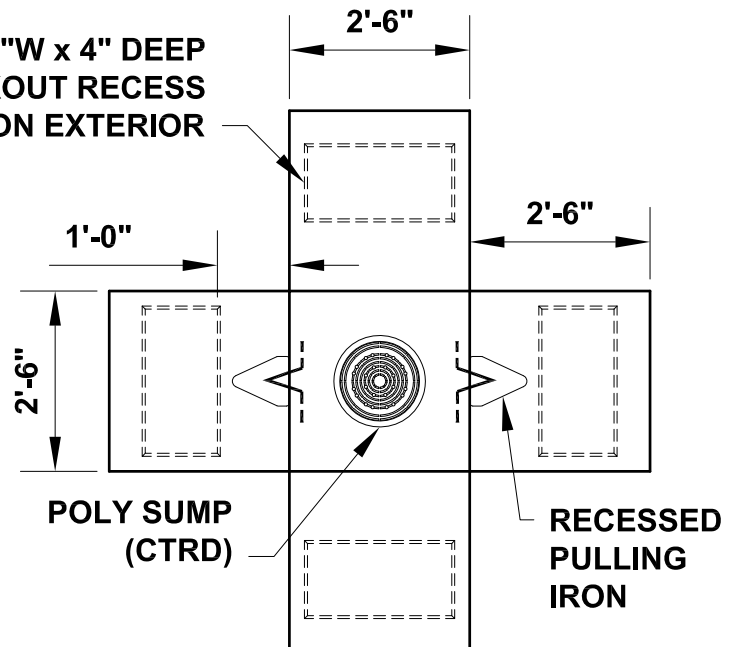


ISOMETRIC VIEW



ROOF SLAB

12"H x 24"W x 4" DEEP
KNOCKOUT RECESS
ON EXTERIOR



SIDES FOLD UP

PALLETTE STONE CORP.

Precast Product Division | 373 Washington Street, Saratoga Springs, New York 12866

Phone: (518) 584-5891 | Fax (518) 584-2622 | www.dacollins.com

4'-0" x 4'-0" x 4'-6" ID PULLBOX

NOTES:

CONCRETE: 5000 PSI

REINFORCEMENT: ASTM A185 GR 65

REINFORCEMENT: ASTM A615 GR 60

ENTRAINED AIR: 5.0% - 9.0%

AASHTO H-20 LL

THICKNESSES:

BASE SLAB - 6"

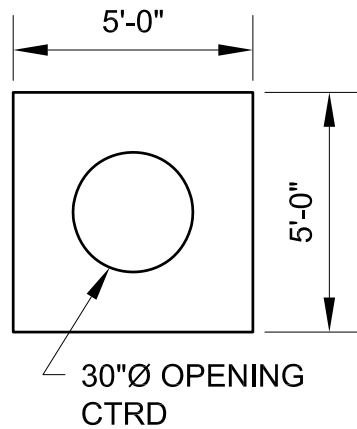
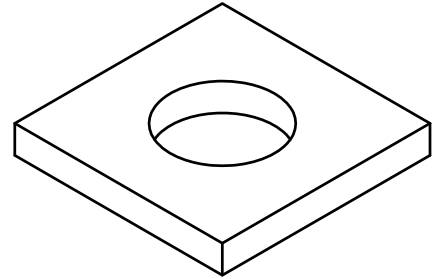
WALLS - 6"

ROOF SLAB - 8"

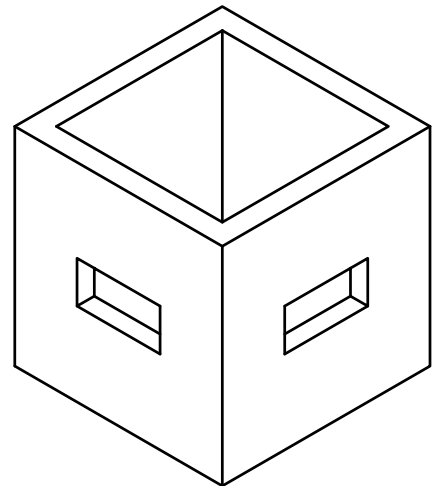
WEIGHTS:

INT. BASE - 7950LBS

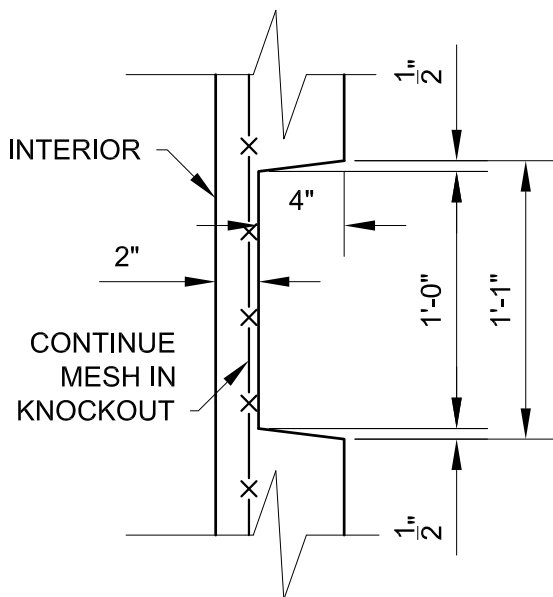
ROOF SLAB - 2515LBS



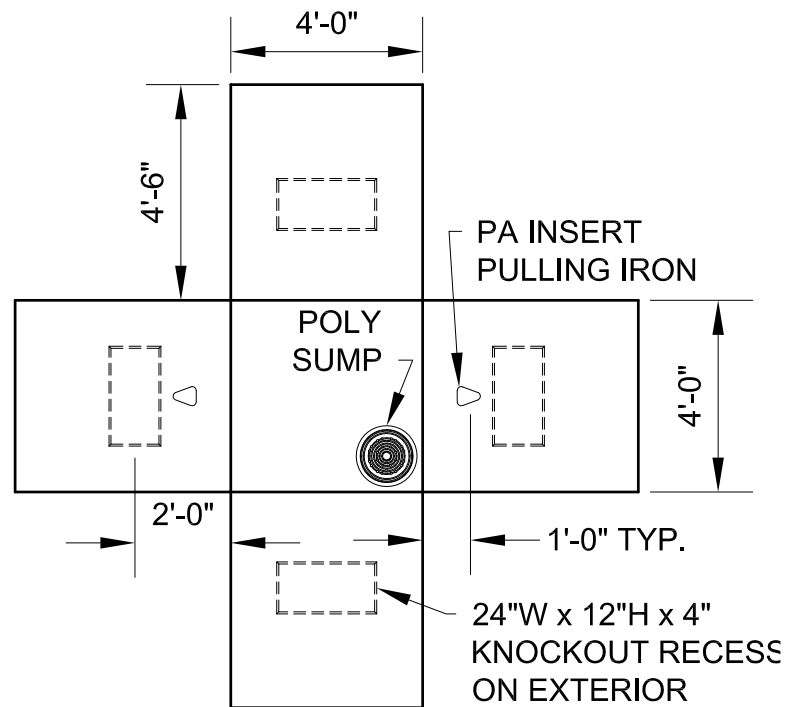
ROOF SLAB



ISOMETRIC VIEW



SECTION @ KNOCKOUT



SIDES FOLD UP

PALLETTE STONE CORP.

Precast Product Division | 373 Washington Street, Saratoga Springs, New York 12866

Phone: (518) 584-5891 | Fax (518) 584-2622 | www.dacollins.com

6'-0" x 8'-0" x 6'-0" ID UTILITY MANHOLE

NOTES:

CONCRETE: 4000 PSI

REINFORCEMENT: ASTM A185 GR 65

REINFORCEMENT: ASTM A615 GR 60

ENTRAINED AIR: 5.0% - 9.0%

AASHTO H-20 LL

THICKNESSES:

BASE SLAB - 6"

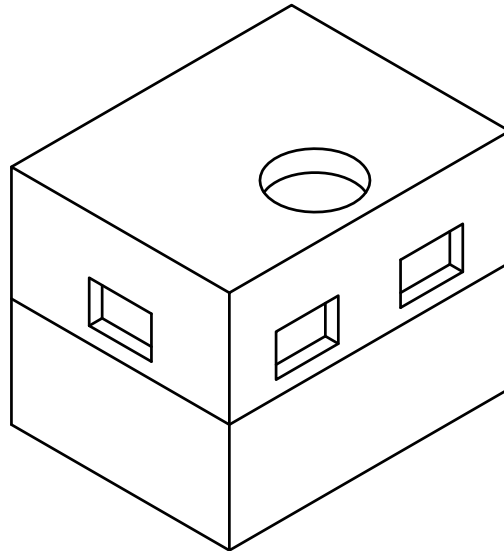
WALLS - 6"

ROOF SLAB - 8"

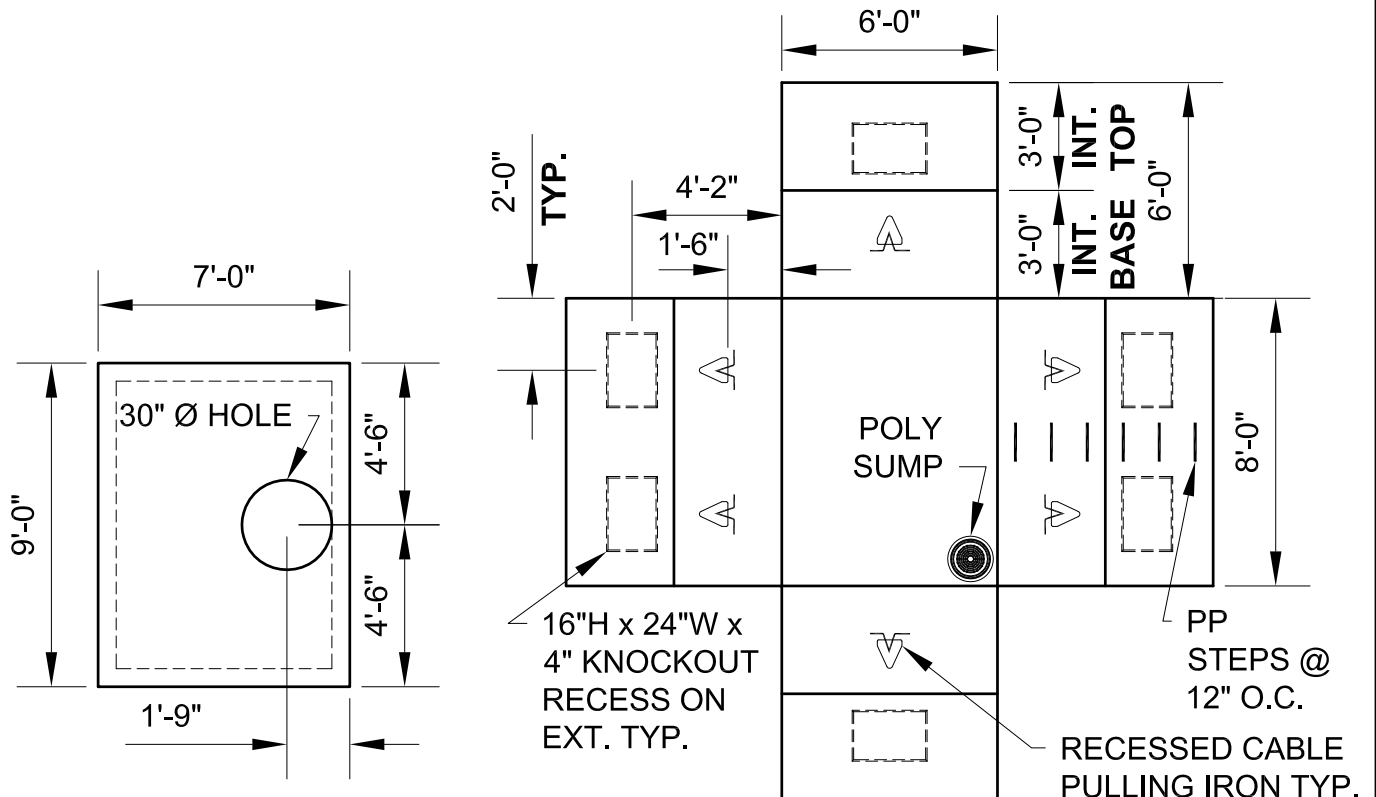
WEIGHTS:

INT. BASE - 11,075 LBS

INTEGRAL TOP - 13,050 LBS



ISOMETRIC VIEW



PLAN - INT. TOP

SIDES FOLD UP