

# MANHOLES



# PALLETTE STONE CORP.

Precast Product Division | 373 Washington Street, Saratoga Springs, New York 12866

Phone: (518) 584-5891 | Fax (518) 584-2622 | www.dacollins.com

## 4'-0" DIAMETER MANHOLE COMPONENTS

### NOTES:

CONCRETE: 4000 PSI

REINFORCEMENT: ASTM A185 GR 65

REINFORCEMENT: ASTM A615 GR 60

ENTRAINED AIR: 5.0% - 9.0%

AASHTO H-20 LL

MANUFACTURED PER ASTM C-478

1" BUTYL SEAL JOINT MATERIAL

### THICKNESSES:

BASE SLAB - 8"

WALLS - 5"

ROOF SLAB - 8"

### WEIGHTS:

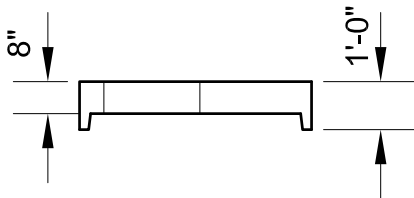
BASE SLAB - 1840LBS

EXT. BASE SLAB - 2685LBS

WALLS PER FT - 865LBS

LIP - 150LBS

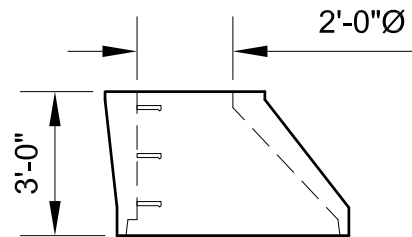
ROOF SLAB - 1670LBS



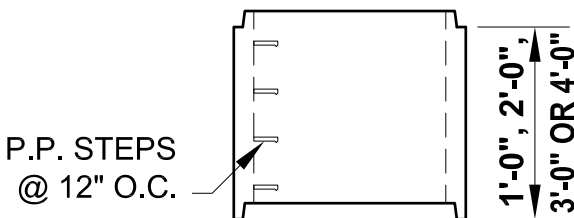
**4'-0" DIAMETER FLAT TOP SLAB**  
AVAILABLE IN STOCK 24"Ø, 24" SQ.

30"Ø AND 30" SQ. OPENINGS

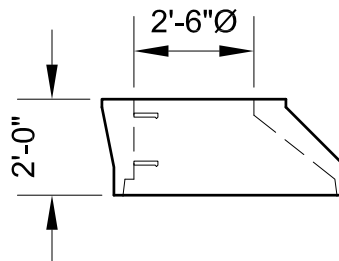
CUSTOM OPENINGS AND CAST-IN HATCHES  
AVAILABLE UPON REQUEST



**4'-0" DIAMETER X 3'-0" ECCENTRIC CONE**

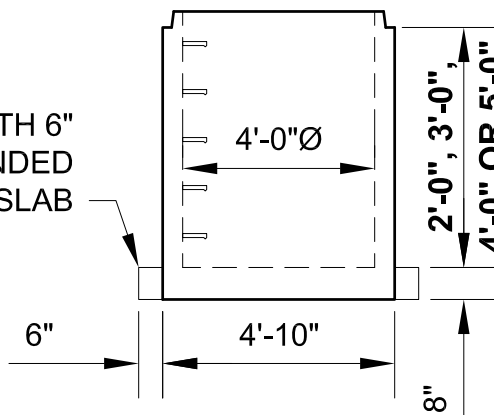


**4'-0" DIAMETER RISER**



**4'-0" DIAMETER X 2'-0" ECCENTRIC CONE**

AVAILABLE WITH 6"  
WIDE EXTENDED  
BASE SLAB



**4'-0" DIAMETER MONOBASE**

# PALLETTE STONE CORP.

Precast Product Division | 373 Washington Street, Saratoga Springs, New York 12866

Phone: (518) 584-5891 | Fax (518) 584-2622 | [www.dacollins.com](http://www.dacollins.com)

## 4'-0" DIAMETER KNOCKOUT MONOBASE

### NOTES:

CONCRETE: 4000 PSI

REINFORCEMENT: ASTM A185 GR 65

REINFORCEMENT: ASTM A615 GR 60

ENTRAINED AIR: 5.0% - 9.0%

AASHTO H-20 LL

MANUFACTURED PER ASTM C-478

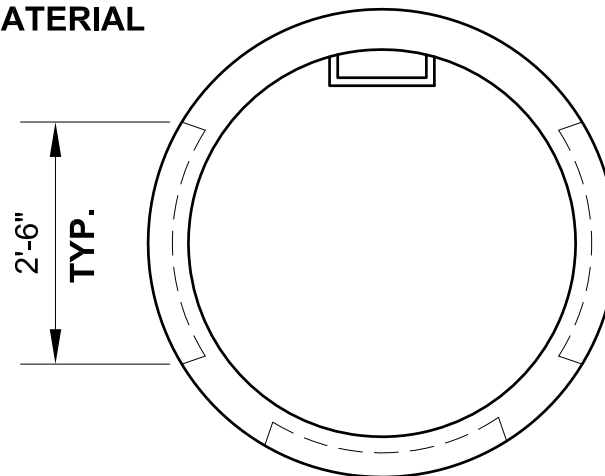
1" BUTYL SEAL JOINT MATERIAL

WEIGHT: 4800LBS

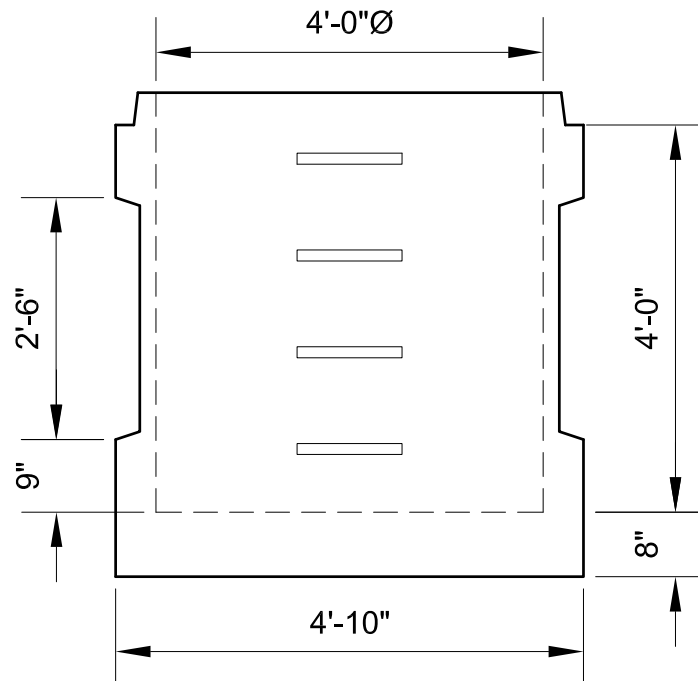
THICKNESSES:

BASE SLAB - 8"

WALLS - 5"



4'-0" DIAMETER KNOCKOUT MONOBASE - PLAN VIEW



4'-0" DIAMETER KNOCKOUT MONOBASE - SIDE VIEW

# PALLETTE STONE CORP.

Precast Product Division | 373 Washington Street, Saratoga Springs, New York 12866

Phone: (518) 584-5891 | Fax (518) 584-2622 | www.dacollins.com

## 5'-0" DIAMETER MANHOLE COMPONENTS

### NOTES:

CONCRETE: 4000 PSI

REINFORCEMENT: ASTM A185 GR 65

REINFORCEMENT: ASTM A615 GR 60

ENTRAINED AIR: 5.0% - 9.0%

AASHTO H-20 LL

MANUFACTURED PER ASTM C-478

1" BUTYL SEAL JOINT MATERIAL

### THICKNESSES:

BASE SLAB - 8"

WALLS - 6"

ROOF SLAB - 8"

### WEIGHTS:

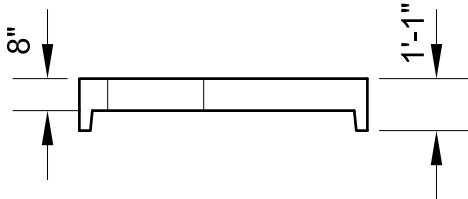
BASE SLAB - 2830LBS

EXT. BASE SLAB - 3850LBS

WALLS PER FT - 1300LBS

LIP - 260LBS

ROOF SLAB - 2775LBS



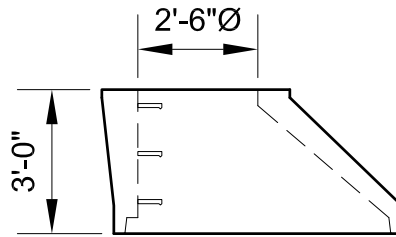
**5'-0" DIAMETER FLAT TOP SLAB**

AVAILABLE IN STOCK 24"Ø, 24" SQ.

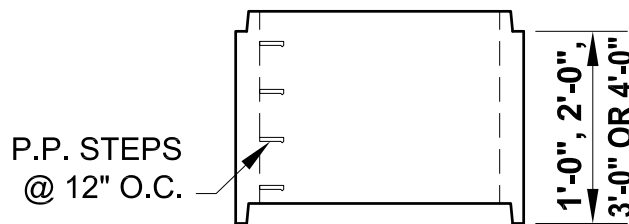
30"Ø AND 30" SQ. OPENINGS

CUSTOM OPENINGS AND CAST-IN HATCHES

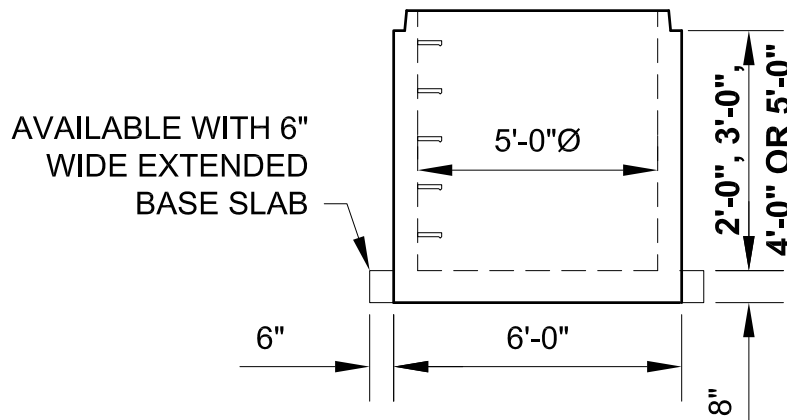
AVAILABLE UPON REQUEST



**5'-0" DIAMETER X 3'-0" ECCENTRIC CONE**



**5'-0" DIAMETER RISER**



**5'-0" DIAMETER MONOBASE**

# PALLETTE STONE CORP.

Precast Product Division | 373 Washington Street, Saratoga Springs, New York 12866

Phone: (518) 584-5891 | Fax (518) 584-2622 | www.dacollins.com

## 6'-0" DIAMETER MANHOLE COMPONENTS

### NOTES:

CONCRETE: 4000 PSI

REINFORCEMENT: ASTM A185 GR 65

REINFORCEMENT: ASTM A615 GR 60

ENTRAINED AIR: 5.0% - 9.0%

AASHTO H-20 LL

MANUFACTURED PER ASTM C-478

1" BUTYL SEAL JOINT MATERIAL

### THICKNESSES:

BASE SLAB - 8"

WALLS - 7"

ROOF SLAB - 8"

### WEIGHTS:

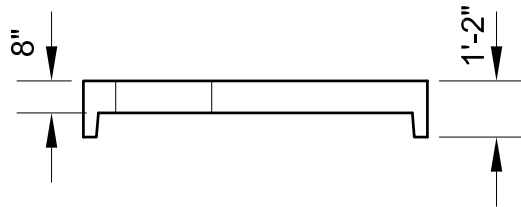
BASE SLAB - 4040LBS

EXT. BASE SLAB - 5245LBS

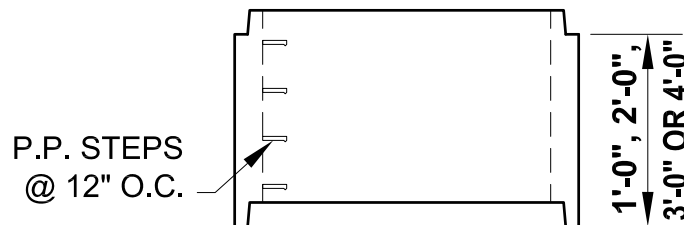
WALLS PER FT - 1815LBS

LIP - 430LBS

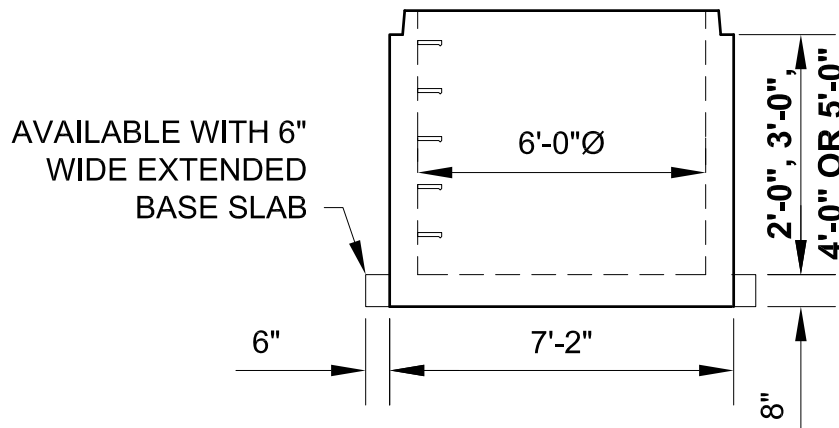
ROOF SLAB - 4160LBS



**6'-0" DIAMETER FLAT TOP SLAB**  
AVAILABLE IN STOCK 24"Ø, 24" SQ.  
30"Ø AND 30" SQ. OPENINGS  
CUSTOM OPENINGS AND CAST-IN HATCHES  
AVAILABLE UPON REQUEST



### 6'-0" DIAMETER RISER



### 6'-0" DIAMETER MONOBASE

# PALLETTE STONE CORP.

Precast Product Division | 373 Washington Street, Saratoga Springs, New York 12866

Phone: (518) 584-5891 | Fax (518) 584-2622 | www.dacollins.com

## 8'-0" DIAMETER MANHOLE COMPONENTS

### NOTES:

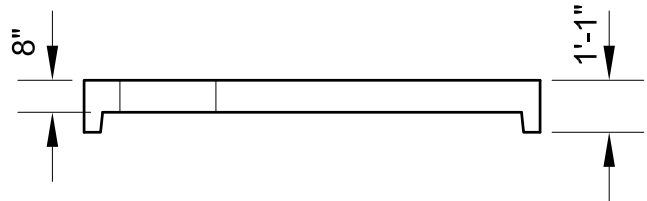
CONCRETE: 4000 PSI  
REINFORCEMENT: ASTM A185 GR 65  
REINFORCEMENT: ASTM A615 GR 60  
ENTRAINED AIR: 5.0% - 9.0%  
AASHTO H-20 LL  
MANUFACTURED PER ASTM C-478  
1" BUTYL SEAL JOINT MATERIAL

### THICKNESSES:

BASE SLAB - 8"  
WALLS - 9"  
ROOF SLAB - 8"

### WEIGHTS:

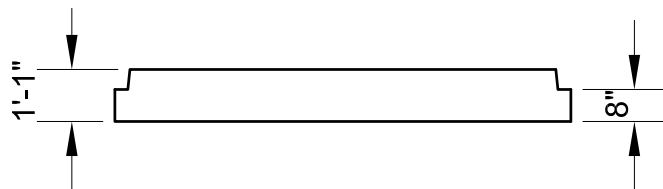
INT. BASE SLAB - 5695LBS  
BASE SLAB EXT.- 1578LBS  
SEPARATE BASE SLAB - 10,838LBS  
WALLS PER FT - 3093LBS  
LIP - 644LBS  
ROOF SLAB - 7418LBS



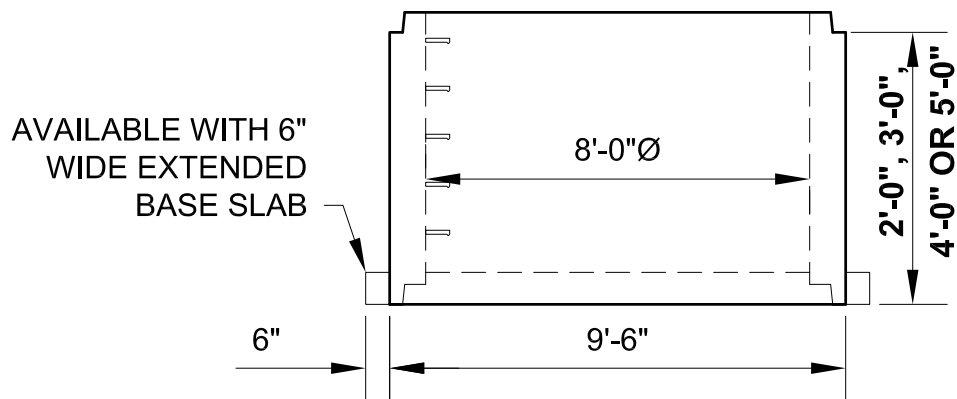
**8'-0" DIAMETER FLAT TOP SLAB**  
AVAILABLE IN STOCK 24"Ø, 24" SQ.  
30"Ø AND 30" SQ. OPENINGS  
CUSTOM OPENINGS AND CAST-IN HATCHES  
AVAILABLE UPON REQUEST



**8'-0" DIAMETER RISER**



**8'-0" DIAMETER SEPARATE BASE SLAB**



**8'-0" DIAMETER INTEGRAL MONOBASE**

# PALLETTE STONE CORP.

Precast Product Division | 373 Washington Street, Saratoga Springs, New York 12866

Phone: (518) 584-5891 | Fax (518) 584-2622 | [www.dacollins.com](http://www.dacollins.com)

## ROUND GRADE RINGS

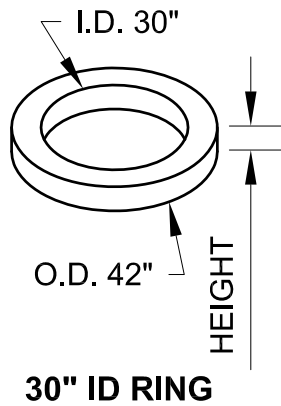
### NOTES:

CONCRETE: 4000 PSI

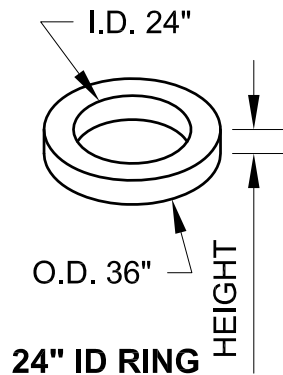
REINFORCEMENT: ASTM A615 GR 60

ENTRAINED AIR: 5.0% - 9.0%

AASHTO H-20 LL



| 30" ID RISER |        |
|--------------|--------|
| HEIGHT       | WEIGHT |
| 2"           | 120LBS |
| 4"           | 240LBS |
| 6"           | 360LBS |
| 8"           | 480LBS |
| 12"          | 720LBS |



| 24" ID RISER |        |
|--------------|--------|
| HEIGHT       | WEIGHT |
| 2"           | 100LBS |
| 4"           | 200LBS |
| 6"           | 300LBS |
| 8"           | 400LBS |
| 12"          | 600LBS |